

Febbraio
2024

FIDArating Analysis

Analisi quantitative a cura dell'Ufficio Studi FIDA



Relazione mensile sul mercato italiano del risparmio gestito

Dati di riferimento: 29/02/2024



FIDA
Finanza Dati Analisi

Ufficio Studi

Via Cernaia 31

10121 - Torino

finance@fida,finacial

Sommario

Introduzione	1
Ranking mensile Categorie Fondi	2
Ranking mensile Fondi	3
Ranking Ytd Categorie Fondi	5
Ranking Ytd Fondi	6
Ranking mensile Categorie ETF	8
Ranking mensile ETF	9
Ranking Ytd Categorie ETF	11
Ranking Ytd ETF	12
FIDArating ESG	14
Grafici	15
Note metodologiche	17

FIDArating Analysis

Conclude le analisi sui dati di fine **febbraio** 2024.

Il mese rivela diversi contrasti e vede l'equity orientato al rialzo, mentre gli asset obbligazionari zoppicano.

Tra le categorie azionarie a specializzazione geografica spicca la Cina con un allungo che sfiora il 10% grazie alle A shares, seguita dai mercati di frontiera, la Grande Cina e la Corea. Quasi il 90% delle categorie si muove in positivo mediamente di tre punti percentuali.

I prodotti azionari settoriali, in allungo in tre casi su quattro, sono dominati dai consumi, dai settori innovativi e dai prodotti sostenibili.

Tra le categorie obbligazionarie, maggiormente penalizzate (circa il 60% è in flessione nel mese), sono le emissioni asiatiche e dei Paesi emergenti a muoversi poco sopra la parità.

Cina, automotive e le esposizioni a leva sugli indici azionari sono i temi di maggiore successo tra i prodotti passivi.

Statistiche del sistema

▪ Strumenti oggetto delle analisi tra fondi e SICAV	59.816	(+280)
▪ Fondi che hanno ricevuto la classificazione FIDArating	54.491	(+127)
▪ Fondi autorizzati e distribuiti alla clientela retail italiana	22.434	(+125)
▪ Fondi che hanno ricevuto il FIDArating	14.694	(+100)
▪ ETF registrati in Italia	1.842	(+6)

Category Ranking

Top 10

Prime 10 categorie FIDA per performance a 1 mese

Indici di categoria	Performance				Vol.
	1m	YTD	1y	3y	3y
FIDA FFI Az Cina A Shares	9,98%	0,25%	-23,74%	-41,60%	18,28%
FIDA FFI Az Cina	8,71%	-1,46%	-23,48%	-48,07%	21,88%
FIDA FFI Az Gl (Mer Em) Frontier Mkts	7,80%	11,51%	23,99%	33,15%	11,73%
FIDA FFI Az Grande Cina	7,71%	-0,25%	-18,62%	-45,03%	22,06%
FIDA FFI Az Corea	7,63%	1,64%	8,37%	-9,10%	22,08%
FIDA FFI Az Usa Large e Mid Growth	6,79%	10,80%	35,98%	35,12%	17,51%
FIDA FFI Az Sett Beni Cons Primari e Secondari	6,64%	7,94%	13,15%	-1,63%	13,40%
FIDA FFI Az Asia Pac (Mer Em Sv ex Giap) Eur H	6,52%	-1,50%	-10,00%	-38,26%	19,06%
FIDA FFI Az Sett Intelligenza Artificiale (Globale)	6,11%	10,45%	39,31%	15,32%	20,85%
FIDA FFI Az Sett IT (Globale)	6,04%	9,82%	33,24%	18,14%	18,93%

*FFI: Fida Fund Index

Dati al 29/02/2024

Bottom 10

Ultime 10 categorie FIDA per performance a 1 mese

Indici di categoria	Performance				Vol.
	1m	YTD	1y	3y	3y
FIDA FFI Az Sett Immobiliare (Europa)	-7,39%	-10,34%	-0,23%	-16,28%	22,83%
FIDA FFI Az Sett Metalli Prez e Minerali EUR Hdg	-7,22%	-14,77%	-13,08%	-23,81%	28,44%
FIDA FFI Az Sett Metalli Prez e Minerali	-7,11%	-13,63%	-10,38%	-10,78%	25,68%
FIDA FFI Az Sett Metalli e Minerali	-5,84%	-9,97%	-17,03%	2,75%	22,55%
FIDA FFI Az Norvegia	-2,15%	-2,56%	-1,11%	2,57%	21,08%
FIDA FFI Obbl Franco Svizzero	-1,90%	-2,80%	8,45%	9,34%	5,77%
FIDA FFI Obbl Corona Norvegese	-1,87%	-3,00%	-0,99%	-9,63%	10,19%
FIDA FFI Monetari Franco Svizzero	-1,83%	-2,63%	6,20%	14,58%	4,90%
FIDA FFI Commodities	-1,65%	-1,20%	-7,07%	25,43%	13,65%
FIDA FFI Ritorno Assoluto (Chf Hdg)	-1,60%	-2,62%	6,25%	6,60%	6,59%

*FFI: Fida Fund Index

Dati al 29/02/2024

Febbraio
2024

Fund Ranking

Top 10

Primi 10 prodotti per performance a 1 mese

Prodotti	Performance				Vol. 3y	FIDA Rating
	1m	YTD	1y	3y		
CompAM SB Blockchain Technology Q EUR <i>Waystone Manag. Comp. Lux SA - LU1275426358</i>	24,60%	1,85%	64,12%	40,08%	37,47%	5
Augmenta Digital Asset Momentum B Cap \$ <i>Framont & Partners Mngt Ltd - MT7000033924</i>	22,43%	11,47%	-	-	-	-
Carmignac China New Economy A EUR Acc <i>Carmignac Gestion Luxembourg - LU2295992320</i>	14,03%	-4,78%	-25,74%	-	-	-
ODDO BHF China Domestic Leaders CN Cap EUR <i>Oddo BHF Asset Management SAS - FR0013280187</i>	13,81%	0,24%	-25,14%	-	-	-
Matthews Asia F. China Small Companies A Cap EUR <i>Carne Gl. Fund Managers (LU) - LU2353186104</i>	13,80%	1,90%	-19,03%	-	-	-
GQG Partners U.S. Equity A Cap EUR <i>Bridge Fund Management Limited - IE000PQY3OK6</i>	13,70%	21,25%	-	-	-	-
SISF China A All Cap A Cap \$ <i>Schroder Inv. Mgmt Europe SA - LU2380219282</i>	13,65%	-4,47%	-23,25%	-	-	-
Pictet-China Environmental Opportunities-R EUR <i>Pictet AM (Europe) S.A. - LU2581850646</i>	13,57%	-4,04%	-	-	-	-
FAM Series JPM China A-Sh Opp. LH Cap EUR <i>Fineco Asset Management DAC - IE00BMZ5K472</i>	12,65%	-1,41%	-25,26%	-	-	-
JPM China A-Share Opportunities C Acc EUR <i>JPMorgan AM Europe S.a.r.l. - LU1255011410</i>	12,51%	-0,54%	-28,82%	-42,71%	19,54%	-

Dati al 29/02/2024

Top 10 - Equity

Primi 10 prodotti per performance a 1 mese

Prodotti	Performance				Vol. 3y	FIDA Rating
	1m	YTD	1y	3y		
Carmignac China New Economy A EUR Acc <i>Carmignac Gestion Luxembourg - LU2295992320</i>	14,03%	-4,78%	-25,74%	-	-	-
ODDO BHF China Domestic Leaders CN Cap EUR <i>Oddo BHF Asset Management SAS - FR0013280187</i>	13,81%	0,24%	-25,14%	-	-	-
Matthews Asia F. China Small Companies A Cap EUR <i>Carne Gl. Fund Managers (LU) - LU2353186104</i>	13,80%	1,90%	-19,03%	-	-	-
GQG Partners U.S. Equity A Cap EUR <i>Bridge Fund Management Limited - IE000PQY3OK6</i>	13,70%	21,25%	-	-	-	-
SISF China A All Cap A Cap \$ <i>Schroder Inv. Mgmt Europe SA - LU2380219282</i>	13,65%	-4,47%	-23,25%	-	-	-
Pictet-China Environmental Opportunities-R EUR <i>Pictet AM (Europe) S.A. - LU2581850646</i>	13,57%	-4,04%	-	-	-	-
FAM Series JPM China A-Sh Opp. LH Cap EUR <i>Fineco Asset Management DAC - IE00BMZ5K472</i>	12,65%	-1,41%	-25,26%	-	-	-
JPM China A-Share Opportunities C Acc EUR <i>JPMorgan AM Europe S.a.r.l. - LU1255011410</i>	12,51%	-0,54%	-28,82%	-42,71%	19,54%	-
UBS (Lux) Eq. Fd Small Caps Usa P Cap \$ <i>UBS Fund Mgmt (Luxembourg) S.A - LU0038842364</i>	12,49%	14,02%	14,67%	-3,72%	21,63%	1
SISF Frontier Mkts Equity A Acc EUR <i>Schroder Inv. Mgmt Europe SA - LU2407913743</i>	12,31%	16,32%	37,40%	-	-	-

Dati al 29/02/2024

Febbraio
2024

Fund Ranking

Top 10 - Bond

Primi 10 prodotti per performance a 1 mese

Prodotti	Performance				Vol. 3y	FIDA Rating
	1m	YTD	1y	3y		
Global Evolution Frontier Markets E \$ <i>Global Evolution Manco S.A. - LU0735966961</i>	2,85%	5,70%	7,71%	20,40%	7,19%	5
MSIF Em. Mkts Fixed Income Opportunities A EUR <i>MSIM Fund Management (Ireland) - LU1258507315</i>	2,83%	5,61%	10,84%	3,96%	7,14%	4
Templeton Emerging Markets Bond A DisM \$ <i>Franklin Templeton Intern Serv - LU0441901922</i>	2,79%	4,92%	14,77%	3,75%	8,65%	3
Abrdn I Frontier Markets Bond A \$ <i>Abrdn Inv. Luxembourg S.A. - LU1725895616</i>	2,58%	5,17%	15,70%	14,89%	10,26%	5
BNP Paribas Emerging Bond Clas EUR <i>BNP Paribas AM Lux - LU0282274348</i>	2,30%	3,63%	7,78%	-1,23%	11,46%	3
FAM Series Vontobel Em. Markets Debt L Cap EUR <i>Fineco Asset Management DAC - IE00BDRT7650</i>	2,26%	4,72%	13,84%	8,01%	9,12%	5
BNL Obbligazioni Emergenti <i>BNP Paribas AM France - IT0000388840</i>	2,25%	3,56%	7,53%	-1,60%	11,35%	2
Fidelity Asian High Yield Y EUR <i>FIL - LU1261430794</i>	2,24%	6,54%	-4,83%	-24,64%	18,14%	2
BGF Asian High Yield Bond E2 Cap EUR <i>BlackRock (Luxembourg) S.A. - LU1728556793</i>	2,23%	7,14%	-4,39%	-25,25%	14,15%	1
UBS (Lux) Bd Sicav Asian High Yield P Dis \$ <i>UBS Fund Mgmt (Luxembourg) S.A - LU0725271786</i>	2,18%	7,38%	-3,48%	-28,88%	18,16%	1

Dati al 29/02/2024

Top 10 - Absolute Return

Primi 10 prodotti per performance a 1 mese

Prodotti	Performance				Vol. 3y	FIDA Rating
	1m	YTD	1y	3y		
Augmenta Digital Asset Momentum B Cap \$ <i>Framont & Partners Mngt Ltd - MT7000033924</i>	22,43%	11,47%	-	-	-	-
Zest Global Opportunities P EUR <i>FundPartner Sol. (Europe) S.A - LU0280698043</i>	8,52%	9,62%	24,02%	-15,82%	21,75%	1
Banor Sicav Greater China Equity J \$ <i>Link Fund Solutions (Lux) S.A. - LU1417208482</i>	8,36%	3,09%	-5,13%	-64,13%	32,16%	1
Carmignac Long-Short Europ. Eqs E EUR Acc <i>Carmignac Gestion Luxembourg - LU1317704135</i>	6,78%	10,07%	11,36%	13,01%	6,98%	4
Agora Global Opportunities R <i>Agora Invest. Sgr S.P.A. - IT0005529794</i>	6,30%	6,74%	-	-	-	-
DWS Invest ESG Mobility LC Cap EUR <i>DWS INVESTMENT - LU2463037890</i>	6,23%	3,45%	10,65%	-	-	-
CT (Lux) Pan Europ. Abs. Alpha AE EUR <i>Threadneedle Management Lux SA - LU1469428814</i>	6,02%	6,09%	11,16%	13,87%	11,32%	4
AB FCP II Emerg.Markets Value Ptf A Cap \$ <i>Alliance Bernstein (Lux) S.A. - LU0474345724</i>	6,01%	5,19%	10,45%	8,17%	15,01%	5
CPR Invest Global Disruptive Opport. A EUR <i>CPR Asset Mgmt - LU1530899142</i>	5,89%	11,36%	30,49%	-6,31%	21,08%	2
FAM Series Global Disruptive Opp. L Cap EUR <i>Fineco Asset Management DAC - IE0007L25SV7</i>	5,85%	11,32%	30,19%	-	-	-

Dati al 29/02/2024

Category Ranking

Top 10

Prime 10 categorie FIDA per performance YTD

Indici di categoria	Performance				Vol.
	1m	YTD	1y	3y	3y
FIDA FFI Az Turchia	2,73%	19,31%	24,20%	75,36%	35,37%
FIDA FFI Az Giappone Large e Mid Growth	4,62%	13,49%	30,03%	41,63%	13,14%
FIDA FFI Az Giappone Usd Hdg	4,84%	12,88%	32,14%	57,93%	12,78%
FIDA FFI Az GI (Mer Em) Frontier Mkts	7,80%	11,51%	23,99%	33,15%	11,73%
FIDA FFI Az Usa Large e Mid Growth	6,79%	10,80%	35,98%	35,12%	17,51%
FIDA FFI Az Giappone Euro Hdg	4,59%	10,70%	32,44%	38,48%	11,27%
FIDA FFI Az Sett Intelligenza Artificiale (Globale)	6,11%	10,45%	39,31%	15,32%	20,85%
FIDA FFI Az Sett IT (Globale)	6,04%	9,82%	33,24%	18,14%	18,93%
FIDA FFI Az GI (Mer Sv) Large e Mid Growth	5,22%	9,34%	24,02%	27,04%	14,39%
FIDA FFI Az Sett Telecom	4,50%	8,97%	28,65%	-0,50%	17,35%

*FFI: Fida Fund Index

Dati al 29/02/2024

Bottom 10

Ultime 10 categorie FIDA per performance YTD

Indici di categoria	Performance				Vol.
	1m	YTD	1y	3y	3y
FIDA FFI Az Sett Metalli Prez e Minerali EUR Hdg	-7,22%	-14,77%	-13,08%	-23,81%	28,44%
FIDA FFI Az Sett Metalli Prez e Minerali	-7,11%	-13,63%	-10,38%	-10,78%	25,68%
FIDA FFI Az Sett Immobiliare (Europa)	-7,39%	-10,34%	-0,23%	-16,28%	22,83%
FIDA FFI Az Sett Metalli e Minerali	-5,84%	-9,97%	-17,03%	2,75%	22,55%
FIDA FFI Az Sett Immobiliare (Globale) EUR Hdg	-0,18%	-4,36%	-0,29%	-11,07%	18,47%
FIDA FFI Obbl Yen Giapponese	-1,54%	-4,32%	-11,99%	-25,90%	7,75%
FIDA FFI Az Sett Energie Alternative	1,64%	-4,29%	-10,53%	-13,72%	21,64%
FIDA FFI Az Brasile	0,20%	-4,17%	22,16%	21,34%	26,72%
FIDA FFI Az America Latina Large e Mid	-0,44%	-3,12%	17,62%	37,42%	20,77%
FIDA FFI Az Sett Ris Nat (Energia e Mat Prime)	-0,93%	-3,06%	-5,32%	30,26%	15,75%

*FFI: Fida Fund Index

Dati al 29/02/2024

Febbraio
2024

Fund Ranking

Top 10

Primi 10 prodotti per performance YTD

Prodotti	Performance				Vol. 3y	FIDA Rating
	1m	YTD	1y	3y		
GQG Partners U.S. Equity A Cap EUR <i>Bridge Fund Management Limited - IE000PQY3OK6</i>	13,70%	21,25%	-	-	-	-
HSBC GIF Turkey Equity A SGD <i>HSBC Investmt Funds (Lux) S.A - LU0213961682</i>	2,28%	19,99%	26,40%	158,45%	35,52%	3
ESPA Stock Istanbul VT EUR <i>Erste Asset Management GmbH - AT0000494893</i>	3,54%	19,15%	13,69%	83,53%	34,53%	2
Matthews Asia F. Japan I Cap \$ Hdg <i>Carne Gl. Fund Managers (LU) - LU1525503915</i>	7,41%	18,60%	45,38%	67,20%	15,54%	3
BNP Paribas Turkey Equity Clas EUR <i>BNP Paribas AM Lux - LU0265293521</i>	2,78%	18,32%	36,06%	116,73%	34,14%	3
GQG Partners Global Equity A Cap \$ <i>Bridge Fund Management Limited - IE00BH480Z36</i>	10,39%	18,10%	39,17%	-	-	-
PrivilEdge Alpha Japan P \$ Hdg <i>Lombard Odier Funds (Europe) - LU2191968812</i>	6,41%	17,88%	40,20%	78,79%	14,08%	4
M&G (Lux) Japan AH \$ <i>M&G Luxembourg S.A - LU1797807127</i>	7,44%	17,51%	42,48%	111,86%	14,49%	4
Lord Abbett Innovation Growth Z Cap \$ <i>Lord Abbett (Ireland) Ltd. - IE00BYZRLZ52</i>	8,95%	17,30%	44,31%	11,55%	21,23%	3
GS Japan Equity Ptf OC Cap \$ Hdg <i>Goldman Sachs AM B.V. - LU0920312682</i>	8,63%	17,30%	40,96%	77,77%	15,07%	4

Dati al 29/02/2024

Top 10 - Equity

Primi 10 prodotti per performance YTD

Prodotti	Performance				Vol. 3y	FIDA Rating
	1m	YTD	1y	3y		
GQG Partners U.S. Equity A Cap EUR <i>Bridge Fund Management Limited - IE000PQY3OK6</i>	13,70%	21,25%	-	-	-	-
HSBC GIF Turkey Equity A SGD <i>HSBC Investmt Funds (Lux) S.A - LU0213961682</i>	2,28%	19,99%	26,40%	158,45%	35,52%	3
ESPA Stock Istanbul VT EUR <i>Erste Asset Management GmbH - AT0000494893</i>	3,54%	19,15%	13,69%	83,53%	34,53%	2
Matthews Asia F. Japan I Cap \$ Hdg <i>Carne Gl. Fund Managers (LU) - LU1525503915</i>	7,41%	18,60%	45,38%	67,20%	15,54%	3
BNP Paribas Turkey Equity Clas EUR <i>BNP Paribas AM Lux - LU0265293521</i>	2,78%	18,32%	36,06%	116,73%	34,14%	3
PrivilEdge Alpha Japan P \$ Hdg <i>Lombard Odier Funds (Europe) - LU2191968812</i>	6,41%	17,88%	40,20%	78,79%	14,08%	4
M&G (Lux) Japan AH \$ <i>M&G Luxembourg S.A - LU1797807127</i>	7,44%	17,51%	42,48%	111,86%	14,49%	4
Lord Abbett Innovation Growth Z Cap \$ <i>Lord Abbett (Ireland) Ltd. - IE00BYZRLZ52</i>	8,95%	17,30%	44,31%	11,55%	21,23%	3
GS Japan Equity Ptf OC Cap \$ Hdg <i>Goldman Sachs AM B.V. - LU0920312682</i>	8,63%	17,30%	40,96%	77,77%	15,07%	4
Neu.Berman 5G Connectivity I5 \$ <i>Neuberger Berman AM Limited - IE00BLXGY04</i>	8,27%	17,18%	45,49%	4,91%	23,50%	5

Dati al 29/02/2024

Febbraio
2024

Fund Ranking

Top 10 - Bond

Primi 10 prodotti per performance YTD

Prodotti	Performance				Vol. 3y	FIDA Rating
	1m	YTD	1y	3y		
Quaestio Global Enhanced Cash R Dis EUR <i>Quaestio Capital Sgr - LU1805547426</i>	0,04%	9,30%	12,20%	9,16%	5,74%	5
UBS (Lux) Bd Sicav China High Yield P Cap \$ <i>UBS Fund Mgmt (Luxembourg) S.A - LU2344565556</i>	1,73%	8,08%	-20,62%	-	-	-
GS Asia High Yield Bond Ptf Base Cap \$ <i>Goldman Sachs AM B.V. - LU2201852659</i>	1,91%	7,44%	-3,13%	-8,68%	15,44%	2
UBS (Lux) Bd Sicav Asian High Yield P Dis \$ <i>UBS Fund Mgmt (Luxembourg) S.A - LU0725271786</i>	2,18%	7,38%	-3,48%	-28,88%	18,16%	1
BGF Asian High Yield Bond E2 Cap EUR <i>BlackRock (Luxembourg) S.A. - LU1728556793</i>	2,23%	7,14%	-4,39%	-25,25%	14,15%	1
Fidelity Asian High Yield Y EUR <i>FIL - LU1261430794</i>	2,24%	6,54%	-4,83%	-24,64%	18,14%	2
Fidelity China High Yield Y Dis \$ <i>FIL - LU1345482589</i>	1,89%	6,31%	-11,80%	-33,96%	21,78%	1
Amundi F. Emerging Markets ST Bond E2 Dis EUR <i>Amundi Luxembourg S.A. - LU1882463547</i>	1,95%	6,31%	7,17%	4,91%	9,24%	3
PIMCO Asia High Yield Bond E Dis HKD Unhdg <i>PIMCO Global Advisors Ltd - IE00BGXSXD13</i>	1,88%	6,20%	-2,25%	-12,39%	13,68%	2
LO Funds Asia Value Bond P \$ <i>Lombard Odier Funds (Europe) - LU1480985222</i>	1,88%	5,90%	6,14%	-2,65%	10,89%	3

Dati al 29/02/2024

Top 10 - Absolute Return

Primi 10 prodotti per performance YTD

Prodotti	Performance				Vol. 3y	FIDA Rating
	1m	YTD	1y	3y		
Liontrust GF European Strategic Equity B3 Cap \$ <i>Liontrust Invest. Partners LLP - IE00BLG2W114</i>	4,66%	12,26%	11,93%	95,59%	13,43%	5
Aspect Diversified Trends F GBP <i>Aspect Capital Limited - IE00B3Q06D97</i>	5,74%	12,04%	8,84%	54,14%	12,75%	5
AZ F.1 Eq. Japan A-AZ FUND Cap EUR Hdg <i>Azimut Investments S.A. - LU2072948370</i>	3,82%	11,58%	33,98%	22,99%	13,96%	4
Augmenta Digital Asset Momentum B Cap \$ <i>Framont & Partners Mngt Ltd - MT7000033924</i>	22,43%	11,47%	-	-	-	-
CPR Invest Global Disruptive Opport. A EUR <i>CPR Asset Mgmt - LU1530899142</i>	5,89%	11,36%	30,49%	-6,31%	21,08%	2
FAM Series Global Disruptive Opp. L Cap EUR <i>Fineco Asset Management DAC - IE0007L25SV7</i>	5,85%	11,32%	30,19%	-	-	-
Carmignac Long-Short Europ. Eqs E EUR Acc <i>Carmignac Gestion Luxembourg - LU1317704135</i>	6,78%	10,07%	11,36%	13,01%	6,98%	4
UBS (Irl) Equity Opp. Long Short P-PF \$ Hdg <i>UBS Fund Management (Irl) Ltd - IE00BSSWB440</i>	0,80%	10,06%	-0,06%	18,06%	14,63%	3
Schroder GAIA Egerton Equity Cap A1 EUR <i>Schroder Inv. Mgmt Europe SA - LU0513501626</i>	5,44%	10,02%	24,16%	14,90%	11,83%	3
RAM (Lux) SF L/S European Equities D \$ <i>RAM Active Investments S.A. - LU0705071610</i>	2,92%	9,93%	4,26%	38,43%	12,12%	5

Dati al 29/02/2024

ETF Category Ranking

Top 10

Prime 10 categorie FIDA per performance a 1 mese

Indici di categoria	Performance				Vol.
	1m	YTD	1y	3y	3y
FIDA FEI Az Leva 3 Long	17,15%	24,29%	60,85%	77,30%	49,09%
FIDA FEI Az. Sett. Auto & Componentistica (Eur.)	12,86%	12,13%	16,48%	36,84%	24,19%
FIDA FEI Az. Cina	10,08%	-2,47%	-20,75%	-43,95%	26,23%
FIDA FEI Az Leva 2 Long	9,60%	12,78%	36,91%	56,37%	31,14%
FIDA FEI Obbl Leva 5 Short	9,45%	12,97%	-17,57%	81,79%	41,96%
FIDA FEI Az. Sett. Beni di Cons.Second.(incl. Lux)	8,37%	6,99%	21,02%	24,91%	21,43%
FIDA FEI Az. Corea	7,78%	-0,83%	11,78%	-14,99%	23,50%
FIDA FEI Az. Sett. Informatica&Tecnologia (GI)	6,79%	7,67%	34,44%	18,38%	20,75%
FIDA FEI Az. Sett. Beni e Servizi Industriali	6,50%	8,02%	19,60%	42,97%	16,48%
FIDA FEI Az. Sett. Risorse Idriche	6,46%	4,77%	14,01%	33,04%	17,48%

*FEI: Fida ETF Index

Dati al 29/02/2024

Bottom 10

Ultime 10 categorie FIDA per performance a 1 mese

Indici di categoria	Performance				Vol.
	1m	YTD	1y	3y	3y
FIDA FEI Commodities Leva 3 Long	-13,23%	-10,62%	-36,28%	2,76%	64,17%
FIDA FEI Az Leva 3 Short	-10,25%	-10,54%	-34,44%	-58,22%	44,82%
FIDA FEI Az Leva 2 Short	-8,68%	-10,16%	-28,14%	-50,94%	33,18%
FIDA FEI Az. Sett. Immobiliare (Eur.)	-8,13%	-11,47%	-0,99%	-21,93%	25,26%
FIDA FEI Az. Sett. Metalli e Minerali	-6,71%	-11,97%	-12,26%	6,26%	22,62%
FIDA FEI Az. Sett. Serv. di Pubbl.Utilita' (Eur.)	-5,69%	-8,57%	2,97%	10,81%	16,65%
FIDA FEI Obbl Leva 3 Long	-5,18%	-5,93%	7,75%	-43,34%	23,06%
FIDA FEI Volatilita'	-4,96%	-6,51%	-47,73%	-74,47%	34,37%
FIDA FEI Az Leva 1 Short	-4,47%	-5,84%	-14,19%	-30,17%	16,08%
FIDA FEI Az. Sett. Materie Prime (Eur.)	-4,16%	-8,40%	-9,33%	7,42%	20,12%

*FEI: Fida ETF Index

Dati al 29/02/2024

Febbraio
2024

ETF Ranking

Top 10

Primi 10 prodotti per performance a 1 mese

Prodotti	Performance				Vol.	FIDA Rating
	1m	YTD	1y	3y	3y	
GraniteShares 3x Long MicroStrategy ETP <i>GraniteShares Financial Plc - XS2617255760</i>	367,49%	131,52%	783,03%	-97,39%	369,67%	-
Leverage Shares 3x Long ARM ETP <i>Leverage Shares p.l.c. - XS2691006303</i>	235,38%	-	-	-	-	-
Leverage Shares 3x Palantir ETP <i>Leverage Shares p.l.c. - XS2663694680</i>	171,46%	124,51%	679,43%	557,17%	440,39%	-
GraniteShares 3x Long Palantir Daily ETP <i>GraniteShares Financial Plc - XS2620728860</i>	171,46%	124,13%	663,39%	-95,59%	327,15%	-
Leverage Shares 3x Long Coinbase (COIN) ETP <i>Leverage Shares p.l.c. - XS2399367254</i>	149,41%	0,81%	214,93%	268,44%	360,44%	-
GraniteShares 3x Long Coinbase Daily ETP <i>GraniteShares Financial Plc - XS2575914176</i>	146,65%	0,36%	174,84%	-99,96%	311,40%	-
GraniteShares 3x Long NVIDIA Daily ETP <i>GraniteShares Financial Plc - XS2193971947</i>	95,11%	274,75%	1963,63%	48,75%	196,02%	-
Leverage Shares 3x NVIDIA ETP <i>Leverage Shares p.l.c. - IE00BK5BZR99</i>	94,78%	275,65%	2017,82%	2245,85%	188,46%	-
WisdomTree Cocoa 2x Daily Leveraged <i>WISDOMTREE COMMODITY SEC. - JE00B2NFV803</i>	72,43%	128,73%	386,70%	305,80%	56,05%	-
GraniteShares 3x Long Facebook ETP <i>GraniteShares Financial Plc - XS2656469561</i>	69,03%	133,94%	1143,26%	-78,80%	150,01%	-

Dati al 29/02/2024

Top 10 - Equity

Primi 10 prodotti azionari per performance a 1 mese

Prodotti	Performance				Vol.	FIDA Rating
	1m	YTD	1y	3y	3y	
GraniteShares 3x Long MicroStrategy ETP <i>GraniteShares Financial Plc - XS2617255760</i>	367,49%	131,52%	783,03%	-97,39%	369,67%	-
Leverage Shares 3x Long ARM ETP <i>Leverage Shares p.l.c. - XS2691006303</i>	235,38%	-	-	-	-	-
Leverage Shares 3x Palantir ETP <i>Leverage Shares p.l.c. - XS2663694680</i>	171,46%	124,51%	679,43%	557,17%	440,39%	-
GraniteShares 3x Long Palantir Daily ETP <i>GraniteShares Financial Plc - XS2620728860</i>	171,46%	124,13%	663,39%	-95,59%	327,15%	-
Leverage Shares 3x Long Coinbase (COIN) ETP <i>Leverage Shares p.l.c. - XS2399367254</i>	149,41%	0,81%	214,93%	268,44%	360,44%	-
GraniteShares 3x Long Coinbase Daily ETP <i>GraniteShares Financial Plc - XS2575914176</i>	146,65%	0,36%	174,84%	-99,96%	311,40%	-
GraniteShares 3x Long NVIDIA Daily ETP <i>GraniteShares Financial Plc - XS2193971947</i>	95,11%	274,75%	1963,63%	48,75%	196,02%	-
Leverage Shares 3x NVIDIA ETP <i>Leverage Shares p.l.c. - IE00BK5BZR99</i>	94,78%	275,65%	2017,82%	2245,85%	188,46%	-
GraniteShares 3x Long Facebook ETP <i>GraniteShares Financial Plc - XS2656469561</i>	69,03%	133,94%	1143,26%	-78,80%	150,01%	-
Leverage Shares 3x Facebook ETP <i>Leverage Shares p.l.c. - IE00BK5C1B80</i>	68,87%	133,76%	1147,27%	1118,26%	88,96%	-

Dati al 29/02/2024

ETF Ranking

Top 10 - Bond

Primi 10 prodotti obbligazionari per performance a 1 mese

Prodotti	Performance				Vol.	FIDA Rating
	1m	YTD	1y	3y	3y	
WisdomTree Bund 10Y 5x Daily Short <i>WisdomTree Multi Asset Issuer - IE00BYNXPH56</i>	11,84%	17,13%	-17,25%	101,86%	45,14%	-
SG ETN Daily Short -5X Bund Future <i>SG ISSUER - XS2425321713</i>	11,60%	16,83%	-19,21%	98,71%	53,11%	-
WisdomTree US Treasuries 10Y 5x Daily Short <i>WisdomTree Multi Asset Issuer - IE00BYNXPJ70</i>	10,95%	15,23%	5,15%	139,72%	38,21%	-
SG ETN Daily Short -5X Us Treasury 10Y Future <i>SG ISSUER - XS2425318925</i>	10,61%	14,71%	4,66%	96,04%	44,17%	-
WisdomTree Bund 30Y 3x Daily Short <i>WisdomTree Multi Asset Issuer - IE00BF4TW453</i>	8,59%	17,20%	-21,33%	105,81%	64,57%	-
WisdomTree Bund 10Y 3x Daily Short <i>WisdomTree Multi Asset Issuer - IE00BKS8QN04</i>	7,25%	10,48%	-7,38%	64,82%	26,74%	-
WisdomTree US Treasuries 30Y 3x Daily Short <i>WisdomTree Multi Asset Issuer - IE00BF4TW784</i>	7,02%	19,75%	11,35%	145,16%	52,68%	-
WisdomTree US Treasuries 10Y 3x Daily Short <i>WisdomTree Multi Asset Issuer - IE00BKS8QT65</i>	6,86%	10,45%	6,45%	89,63%	25,03%	-
Amundi German Bund Daily (-2x) Inverse UCITS ETF <i>Amundi Asset Management SAS - FR0010869578</i>	4,96%	7,23%	-2,89%	45,36%	17,75%	-
Amundi US Treas. 10Y Daily (-2x) Inverse UCITS ETF <i>Amundi Asset Management SAS - FR0011607084</i>	4,85%	8,08%	6,74%	67,06%	18,53%	-

Dati al 29/02/2024

Top 10 - Commodities

Primi 10 prodotti su materie prime per performance a 1 mese

Prodotti	Performance				Vol.	FIDA Rating
	1m	YTD	1y	3y	3y	
WisdomTree Cocoa 2x Daily Leveraged <i>WISDOMTREE COMMODITY SEC. - JE00B2NFV803</i>	72,43%	128,73%	386,70%	305,80%	56,05%	-
SG ETC Daily Short -3X Natural Gas Future <i>SG ISSUER - XS2425314429</i>	35,32%	16,03%	-10,93%	197,91%	220,11%	-
WisdomTree Cocoa <i>WISDOMTREE COMMODITY SEC. - JE00B2QXZK10</i>	33,80%	56,47%	133,47%	142,55%	26,20%	3
SG ETC Daily Short -2X Natural Gas Future <i>SG ISSUER - XS2425320400</i>	28,83%	22,96%	38,25%	312,13%	133,75%	-
WisdomTree Nickel 2x Daily Leveraged <i>WISDOMTREE COMMODITY SEC. - JE00BDD9QB77</i>	20,94%	14,24%	-56,53%	-75,54%	60,27%	-
SG ETC Daily Short -1X Natural Gas Future <i>SG ISSUER - XS2425314692</i>	16,43%	17,90%	44,18%	164,95%	60,58%	-
WisdomTree Cotton - EUR Daily Hedged <i>WISDOMTREE HDG COMMODITY SEC. - JE00B70DCH80</i>	16,40%	22,52%	17,71%	30,20%	33,90%	2
WisdomTree Cotton <i>WISDOMTREE COMMODITY SEC. - GB00B15KXT11</i>	16,29%	25,52%	18,59%	53,26%	34,27%	3
WisdomTree Natural Gas 3x Daily Short <i>WisdomTree Multi Asset Issuer - IE00B76BRD76</i>	15,24%	27,96%	188,45%	-98,59%	199,27%	-
SG ETC Daily Long +3X WTI Oil Future <i>SG ISSUER - XS2425321804</i>	10,59%	29,63%	-15,99%	-86,41%	79,94%	-

Dati al 29/02/2024

ETF Category Ranking

Top 10

Prime 10 categorie FIDA per performance YTD

Indici di categoria	Performance				Vol.
	1m	YTD	1y	3y	3y
FIDA FEI Az Leva 3 Long	17,15%	24,29%	60,85%	77,30%	49,09%
FIDA FEI Az. Turchia	3,68%	16,44%	8,30%	26,88%	36,75%
FIDA FEI Az. Giappone - Euro Hedged	5,32%	14,20%	38,96%	49,97%	12,75%
FIDA FEI Obbl Leva 5 Short	9,45%	12,97%	-17,57%	81,79%	41,96%
FIDA FEI Az Leva 2 Long	9,60%	12,78%	36,91%	56,37%	31,14%
FIDA FEI Az. Sett. Auto & Componentistica (Eur.)	12,86%	12,13%	16,48%	36,84%	24,19%
FIDA FEI Az. Sett. Telecomunicazioni	5,24%	11,89%	44,33%	18,00%	16,88%
FIDA FEI Az. Sett. Viaggi e tempo libero (Eur.)	3,91%	9,99%	16,80%	5,92%	25,75%
FIDA FEI Commodities Petrolio	2,23%	9,98%	8,11%	105,44%	26,71%
FIDA FEI Az. Sett. Informatica&Tecnologia (USA)	5,66%	9,81%	46,35%	47,51%	19,40%

*FFI: Fida Fund Index

Dati al 29/02/2024

Bottom 10

Ultime 10 categorie FIDA per performance YTD

Indici di categoria	Performance				Vol.
	1m	YTD	1y	3y	3y
FIDA FEI Commodities Palladio	-1,98%	-13,21%	-33,88%	-55,05%	35,62%
FIDA FEI Az. Sett. Metalli e Minerali	-6,71%	-11,97%	-12,26%	6,26%	22,62%
FIDA FEI Az. Sett. Immobiliare (Eur.)	-8,13%	-11,47%	-0,99%	-21,93%	25,26%
FIDA FEI Commodities Platino	-4,02%	-10,77%	-9,53%	-24,62%	17,37%
FIDA FEI Commodities Leva 3 Long	-13,23%	-10,62%	-36,28%	2,76%	64,17%
FIDA FEI Az Leva 3 Short	-10,25%	-10,54%	-34,44%	-58,22%	44,82%
FIDA FEI Az Leva 2 Short	-8,68%	-10,16%	-28,14%	-50,94%	33,18%
FIDA FEI Az. Sett. Serv. di Pubbl.Utilita' (Eur.)	-5,69%	-8,57%	2,97%	10,81%	16,65%
FIDA FEI Az. Sett. Materie Prime (Eur.)	-4,16%	-8,40%	-9,33%	7,42%	20,12%
FIDA FEI Volatilita'	-4,96%	-6,51%	-47,73%	-74,47%	34,37%

*FFI: Fida Fund Index

Dati al 29/02/2024

Febbraio
2024

ETF Ranking

Top 10

Primi 10 prodotti per performance YTD

Prodotti	Performance				Vol. 3y	FIDA Rating
	1m	YTD	1y	3y		
Leverage Shares 3x NVIDIA ETP <i>Leverage Shares p.l.c. - IE00BK5BZR99</i>	94,78%	275,65%	2017,82%	2245,85%	188,46%	-
GraniteShares 3x Long NVIDIA Daily ETP <i>GraniteShares Financial Plc - XS2193971947</i>	95,11%	274,75%	1963,63%	48,75%	196,02%	-
GraniteShares 3x Short NIO Daily ETP <i>GraniteShares Financial Plc - XS2626290311</i>	-13,15%	189,24%	-69,89%	-96,75%	281,91%	-
Leverage Shares -3x Short NIO ETP <i>Leverage Shares p.l.c. - XS2706223133</i>	-14,85%	179,72%	53,94%	53,94%	456,68%	-
GraniteShares 3x Long Spotify Daily ETP <i>GraniteShares Financial Plc - XS2435549261</i>	53,89%	134,19%	476,29%	-46,49%	161,36%	-
GraniteShares 3x Long Facebook ETP <i>GraniteShares Financial Plc - XS2656469561</i>	69,03%	133,94%	1143,26%	-78,80%	150,01%	-
Leverage Shares 3x Facebook ETP <i>Leverage Shares p.l.c. - IE00BK5C1B80</i>	68,87%	133,76%	1147,27%	1118,26%	88,96%	-
GraniteShares 3x Long MicroStrategy ETP <i>GraniteShares Financial Plc - XS2617255760</i>	367,49%	131,52%	783,03%	-97,39%	369,67%	-
WisdomTree Cocoa 2x Daily Leveraged <i>WISDOMTREE COMMODITY SEC. - JE00B2NFV803</i>	72,43%	128,73%	386,70%	305,80%	56,05%	-
Leverage Shares 3x Palantir ETP <i>Leverage Shares p.l.c. - XS2663694680</i>	171,46%	124,51%	679,43%	557,17%	440,39%	-

Dati al 29/02/2024

Top 10 - Equity

Primi 10 prodotti azionari per performance YTD

Prodotti	Performance				Vol. 3y	FIDA Rating
	1m	YTD	1y	3y		
Leverage Shares 3x NVIDIA ETP <i>Leverage Shares p.l.c. - IE00BK5BZR99</i>	94,78%	275,65%	2017,82%	2245,85%	188,46%	-
GraniteShares 3x Long NVIDIA Daily ETP <i>GraniteShares Financial Plc - XS2193971947</i>	95,11%	274,75%	1963,63%	48,75%	196,02%	-
GraniteShares 3x Short NIO Daily ETP <i>GraniteShares Financial Plc - XS2626290311</i>	-13,15%	189,24%	-69,89%	-96,75%	281,91%	-
Leverage Shares -3x Short NIO ETP <i>Leverage Shares p.l.c. - XS2706223133</i>	-14,85%	179,72%	53,94%	53,94%	456,68%	-
GraniteShares 3x Long Spotify Daily ETP <i>GraniteShares Financial Plc - XS2435549261</i>	53,89%	134,19%	476,29%	-46,49%	161,36%	-
GraniteShares 3x Long Facebook ETP <i>GraniteShares Financial Plc - XS2656469561</i>	69,03%	133,94%	1143,26%	-78,80%	150,01%	-
Leverage Shares 3x Facebook ETP <i>Leverage Shares p.l.c. - IE00BK5C1B80</i>	68,87%	133,76%	1147,27%	1118,26%	88,96%	-
GraniteShares 3x Long MicroStrategy ETP <i>GraniteShares Financial Plc - XS2617255760</i>	367,49%	131,52%	783,03%	-97,39%	369,67%	-
Leverage Shares 3x Palantir ETP <i>Leverage Shares p.l.c. - XS2663694680</i>	171,46%	124,51%	679,43%	557,17%	440,39%	-
GraniteShares 3x Long Palantir Daily ETP <i>GraniteShares Financial Plc - XS2620728860</i>	171,46%	124,13%	663,39%	-95,59%	327,15%	-

Dati al 29/02/2024

ETF Ranking

Top 10 - Bond

Primi 10 prodotti obbligazionari per performance YTD

Prodotti	Performance				Vol. 3y	FIDA Rating
	1m	YTD	1y	3y		
WisdomTree US Treasuries 30Y 3x Daily Short <i>WisdomTree Multi Asset Issuer - IE00BF4TW784</i>	7,02%	19,75%	11,35%	145,16%	52,68%	-
WisdomTree Bund 30Y 3x Daily Short <i>WisdomTree Multi Asset Issuer - IE00BF4TW453</i>	8,59%	17,20%	-21,33%	105,81%	64,57%	-
WisdomTree Bund 10Y 5x Daily Short <i>WisdomTree Multi Asset Issuer - IE00BYNXPH56</i>	11,84%	17,13%	-17,25%	101,86%	45,14%	-
SG ETN Daily Short -5X Bund Future <i>SG ISSUER - XS2425321713</i>	11,60%	16,83%	-19,21%	98,71%	53,11%	-
WisdomTree US Treasuries 10Y 5x Daily Short <i>WisdomTree Multi Asset Issuer - IE00BYNXPJ70</i>	10,95%	15,23%	5,15%	139,72%	38,21%	-
SG ETN Daily Short -5X Us Treasury 10Y Future <i>SG ISSUER - XS2425318925</i>	10,61%	14,71%	4,66%	96,04%	44,17%	-
WisdomTree Bund 10Y 3x Daily Short <i>WisdomTree Multi Asset Issuer - IE00BKS8QN04</i>	7,25%	10,48%	-7,38%	64,82%	26,74%	-
WisdomTree US Treasuries 10Y 3x Daily Short <i>WisdomTree Multi Asset Issuer - IE00BKS8QT65</i>	6,86%	10,45%	6,45%	89,63%	25,03%	-
Amundi US Treas. 10Y Daily (-2x) Inverse UCITS ETF <i>Amundi Asset Management SAS - FR0011607084</i>	4,85%	8,08%	6,74%	67,06%	18,53%	-
Amundi German Bund Daily (-2x) Inverse UCITS ETF <i>Amundi Asset Management SAS - FR0010869578</i>	4,96%	7,23%	-2,89%	45,36%	17,75%	-

Dati al 29/02/2024

Top 10 - Commodities

Primi 10 prodotti su materie prime per performance YTD

Prodotti	Performance				Vol. 3y	FIDA Rating
	1m	YTD	1y	3y		
WisdomTree Cocoa 2x Daily Leveraged <i>WISDOMTREE COMMODITY SEC. - JE00B2NFV803</i>	72,43%	128,73%	386,70%	305,80%	56,05%	-
WisdomTree Cocoa <i>WISDOMTREE COMMODITY SEC. - JE00B2QXZK10</i>	33,80%	56,47%	133,47%	142,55%	26,20%	3
WisdomTree Sugar 3x Daily Leveraged <i>WISDOMTREE COMMODITY SEC. - JE00BYQY7H96</i>	-14,52%	32,75%	18,57%	116,76%	82,46%	-
SG ETC Daily Long +3X WTI Oil Future <i>SG ISSUER - XS2425321804</i>	10,59%	29,63%	-15,99%	-86,41%	79,94%	-
WisdomTree Natural Gas 3x Daily Short <i>WisdomTree Multi Asset Issuer - IE00B76BRD76</i>	15,24%	27,96%	188,45%	-98,59%	199,27%	-
WisdomTree Cotton <i>WISDOMTREE COMMODITY SEC. - GB00B15KXT11</i>	16,29%	25,52%	18,59%	53,26%	34,27%	3
SG ETC Daily Long +3X Brent Oil Future <i>SG ISSUER - XS2425318768</i>	7,79%	25,21%	-15,10%	-79,21%	69,97%	-
WisdomTree WTI Crude Oil 3x Daily Leveraged <i>WisdomTree Multi Asset Issuer - IE00BMTM6B32</i>	6,92%	24,24%	-12,46%	-25,19%	77,22%	-
WisdomTree Sugar 2x Daily Leveraged <i>WISDOMTREE COMMODITY SEC. - JE00B2NFTW01</i>	-9,59%	23,51%	22,15%	111,33%	53,76%	-
SG ETC Daily Short -2X Natural Gas Future <i>SG ISSUER - XS2425320400</i>	28,83%	22,96%	38,25%	312,13%	133,75%	-

Dati al 29/02/2024

FIDArating ESG

Top 10 - Fondi

Primi 10 prodotti attivi per Score ESG

Prodotti	ESG Level	ESG Score	ESG Rating
DPAM L Bonds Government Sustainable Hdg B Cap EUR <i>Degroof Petercam Asset Serv. - LU0336683502</i>	art.9	98,27	5
Pictet-Climate Government Bonds-R EUR <i>Pictet AM (Europe) S.A. - LU2468126086</i>	art.9	97,96	5
Vontobel Green Bond C EUR <i>Vontobel Asset Mgmt S.A. - LU1651443258</i>	art.9	96,82	5
Nordea 1 Green Bond BP EUR <i>Nordea Invs. Funds S.A. - LU2327920356</i>	art.9	93,30	5
Allianz Green Bond AT Cap EUR <i>Allianz Global Inv. GmbH (Lux) - LU1542252181</i>	art.9	93,17	5
Sella Investimenti Sostenibili C <i>Sella Sgr Spa - IT0005067480</i>	art.9	93,09	5
GS III Sovereign Green Bond X Cap EUR <i>Goldman Sachs AM B.V. - LU2280235743</i>	art.9	91,78	5
Candriam Sust. Bond Euro R EUR <i>Candriam - LU1313770023</i>	art.9	91,51	5
Amundi F. Euro Corp. ST Green Bond G EUR <i>Amundi Luxembourg S.A. - LU0945151735</i>	art.9	90,77	5
EF Absolute Green Bonds R Cap EUR <i>Eurizon Capital S.A. - LU1693963701</i>	art.9	90,55	5

Dati al 29/12/2023

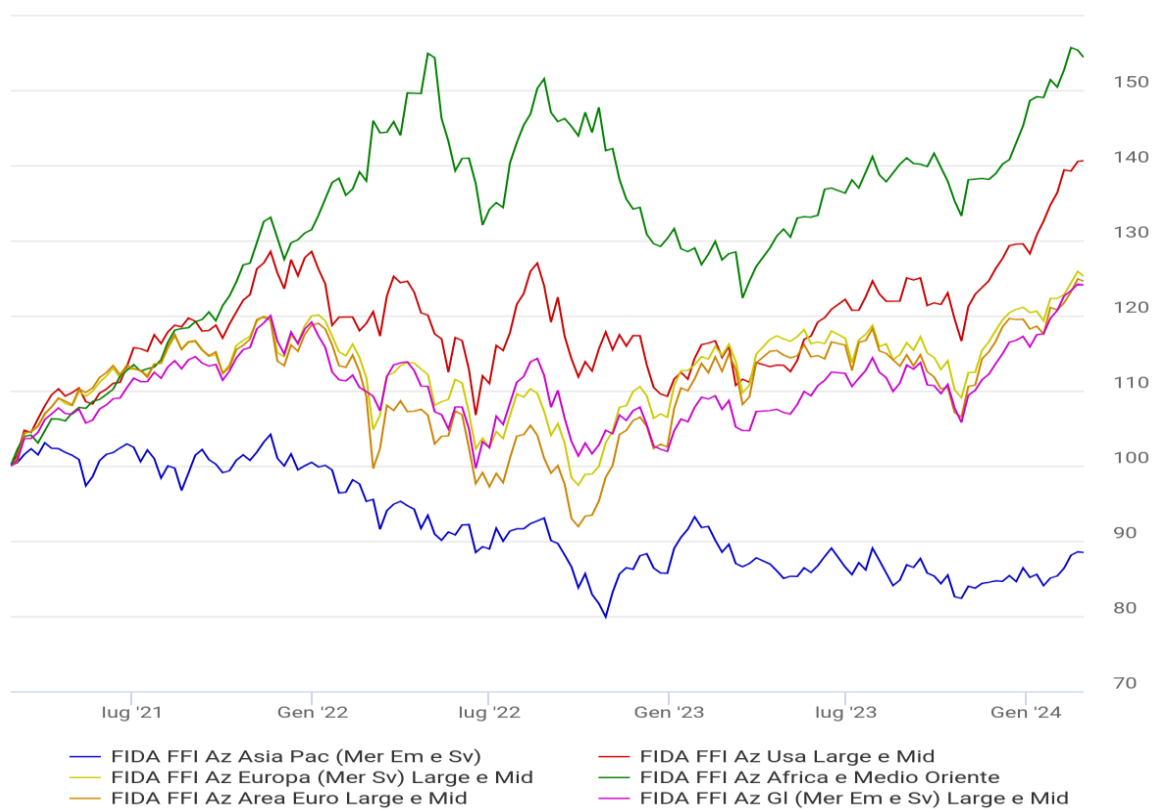
Top 10 - ETF

Primi 10 prodotti passivi per Score ESG

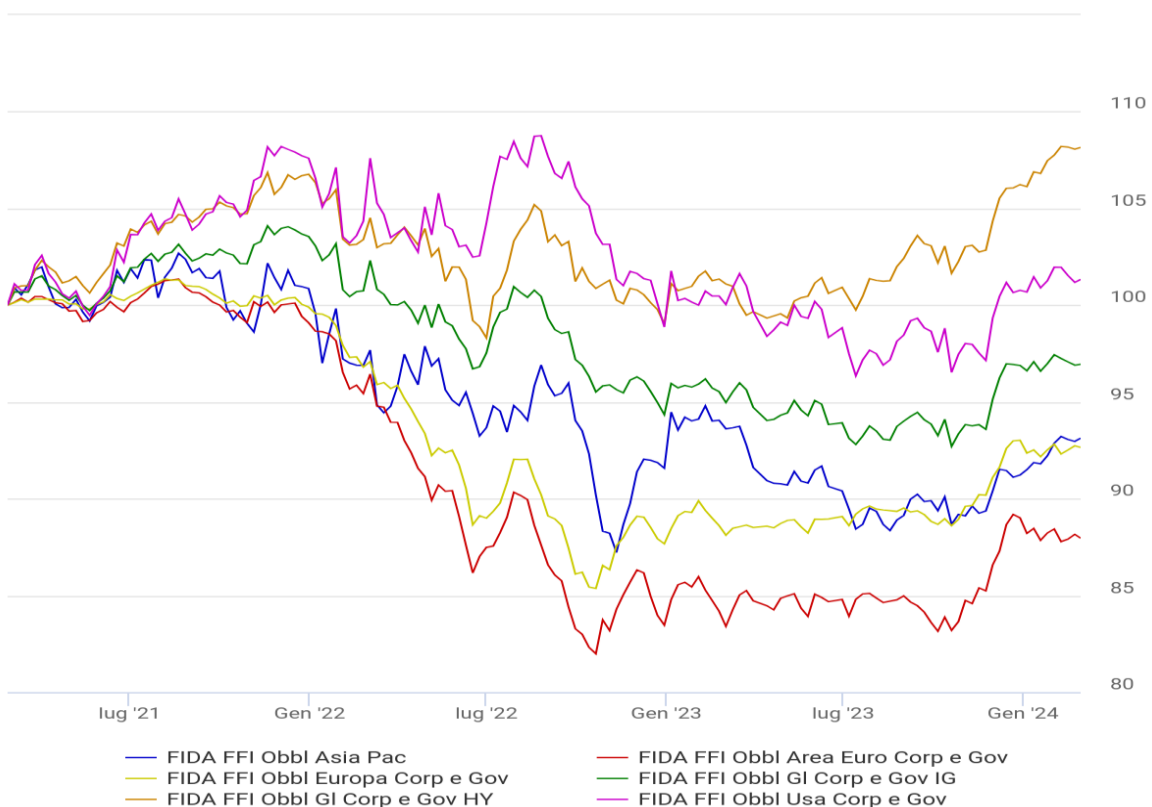
Prodotti	ESG Level	ESG Score	ESG Rating
Amundi Euro Government Green Bond UCITS ETF Acc <i>Amundi Asset Management SAS - LU2356220926</i>	art.9	91,39	5
BNP P.Easy JPM ESG Green S & S IG EUR Bd UCITS ETF <i>BNP Paribas AM Lux - LU2365458731</i>	art.9	89,37	5
L&G Clean Energy UCITS ETF <i>LGIM Managers (Europe) Limited - IE00BK5BCH80</i>	art.9	88,97	5
JPM Green Social Sustainable Bond UCITS ETF Acc <i>JPMorgan AM Europe S.a.r.l. - IE0005FKEK99</i>	art.9	88,81	5
JPM Clima Change Solutions UCITS ETF USD <i>JPMorgan AM Europe S.a.r.l. - IE0000851EX4</i>	art.9	86,91	5
L&G Hydrogen Economy UCITS ETF <i>LGIM Managers (Europe) Limited - IE00BMYDM794</i>	art.9	86,31	5
Xtrackers EUR Corp. Green Bond UCITS ETF 1C <i>DWS INVESTMENT - IE000MCFVK47</i>	art.9	85,95	5
Xtrackers USD Corp. Green Bond UCITS ETF 2C <i>DWS INVESTMENT - IE0003W9O921</i>	art.9	85,27	5
L&G Clean Water UCITS ETF <i>LGIM Managers (Europe) Limited - IE00BK5BC891</i>	art.9	84,38	5
Amundi IS Euro Gov. Tilted Green Bond UCITS ETF Acc <i>Amundi Luxembourg S.A. - LU1681046261</i>	art.8	83,85	5

Dati al 29/12/2023

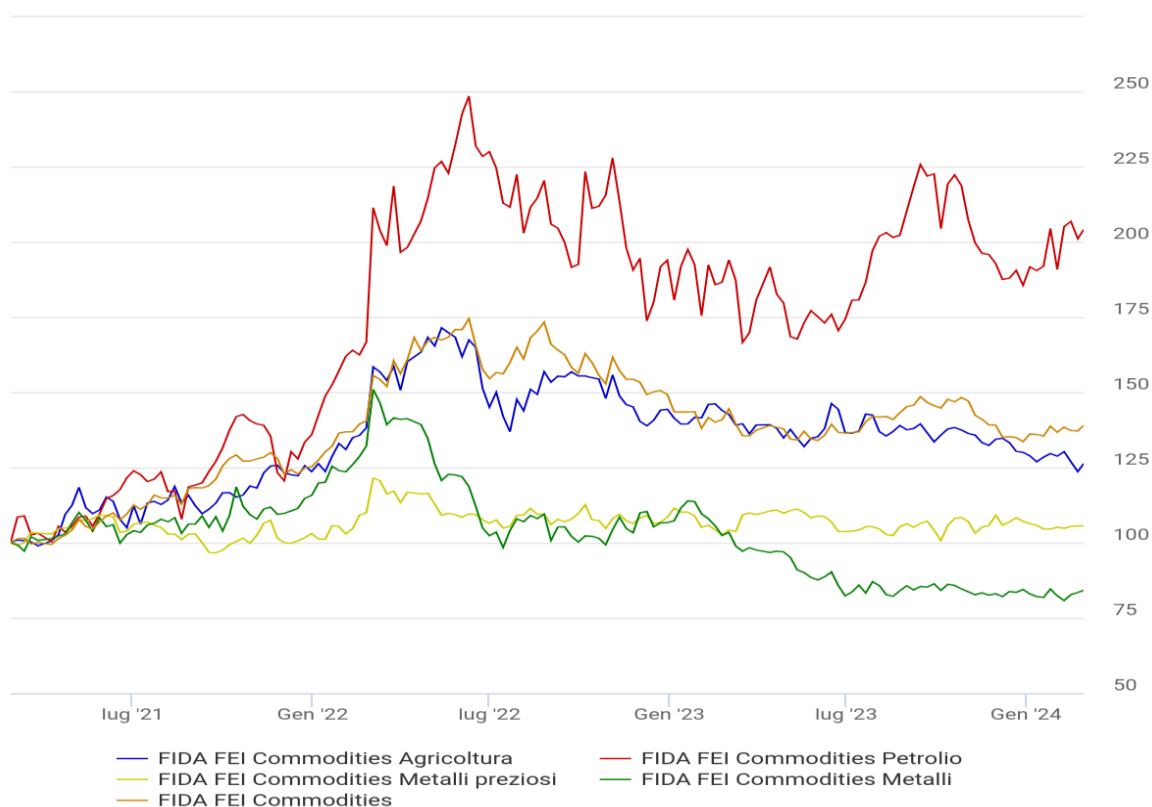
Mercati azionari (3Y)



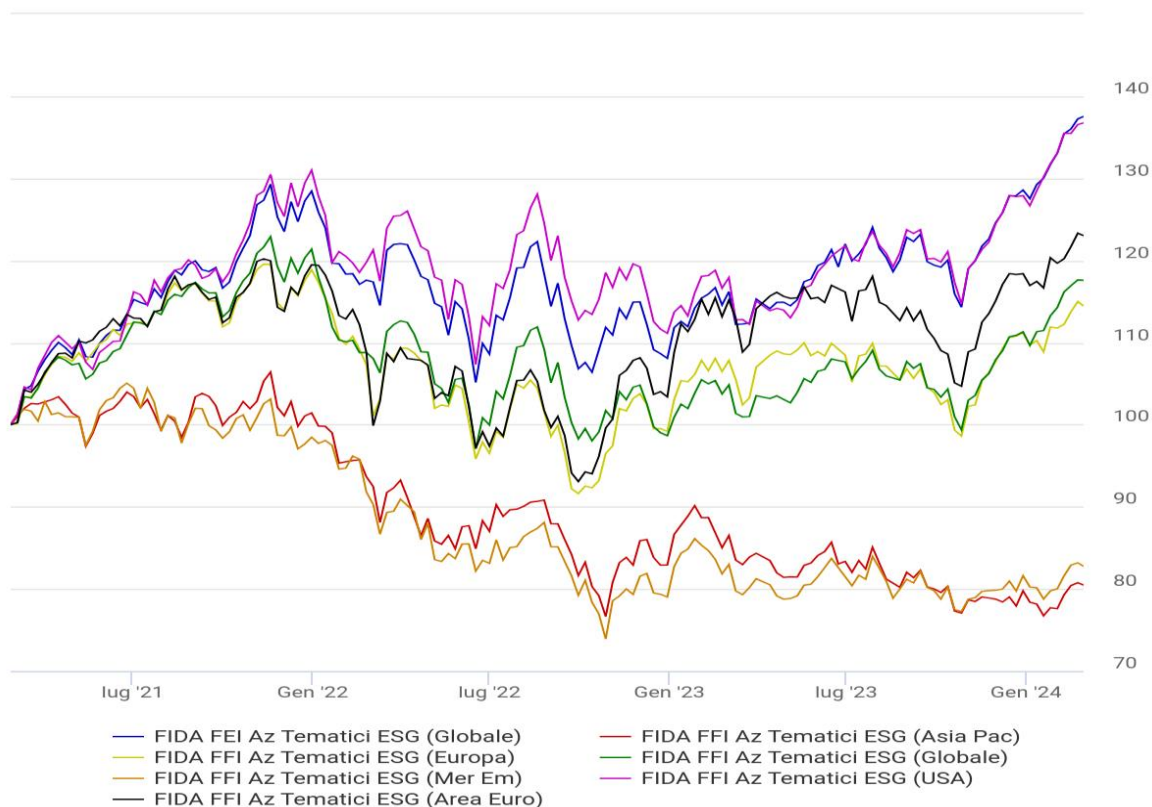
Mercati obbligazionari (3Y)



Materie Prime (3Y)



Investimenti Sostenibili (3Y)



Il sistema FIDArating è un processo di analisi di strumenti finanziari che consiste nella classificazione rispetto ad aspetti qualitativi e quantitativi, costruzione di categorie omogenee e assegnazione di score e rating mediante algoritmi proprietari.

Nell'ambito del risparmio gestito l'oggetto dell'analisi è la composizione del portafoglio nella sua continuità temporale, riassumibile nella politica di investimento. Le strategie di investimento possono essere desunte con diverse metodologie complementari, che si basano sia sulle dichiarazioni di intenti che su quello che viene effettivamente realizzato nelle gestioni.

Analisi dei prospetti

Politica di investimento dichiarata

Il primo passo consiste nell'individuazione, attraverso la documentazione legale, dell'obiettivo e della politica d'investimento, che definiscono il perimetro di massima all'interno del quale opererà il gestore.

Verifica del benchmark di investimento

Spesso il benchmark dichiarato permette di comprendere con un buon grado di approssimazione le possibili scelte d'investimento. In altri casi il benchmark può non avere alcun collegamento con il portafoglio del fondo, rappresentando una mera soglia da superare.

Analisi del portafoglio

Composizione di portafoglio

La composizione di portafoglio dei fondi, pubblicata con diversi gradi di frequenza e grado di dettaglio, può fornire importanti indicazioni sulle caratteristiche d'investimento.

Stile di investimento

È utile verificare quanto, nel tempo, le strategie siano state coerenti con la politica di investimento dichiarata: attraverso metodologie quantitative si determina quanto l'andamento del valore delle quote storiche possa essere ricondotto a quello di determinati indici di mercato.



Le analisi mensili

Fund Category Ranking: le classifiche si basano sugli indici FIDA Fund Index, calcolati mediante la capitalizzazione composta giornaliera dei rendimenti dei prodotti appartenenti alla medesima categoria. Sono escluse le categorie di chiusura.

Fund Ranking: sono inclusi tutti i prodotti autorizzati alla vendita in Italia e distribuibili alla clientela retail. Nelle classifiche per tipologia sono compresi esclusivamente quelli cui è attribuita una categoria.

ETF Category Ranking: le classifiche si basano sugli indici FIDA ETF Index, calcolati mediante la capitalizzazione composta giornaliera dei rendimenti dei prodotti appartenenti alla medesima categoria.

ETF Ranking: sono inclusi tutti i prodotti quotati su Borsa Italiana. Nelle classifiche per tipologia sono compresi esclusivamente quelli cui è attribuita una categoria.

FIDArating ESG

Il primo rating italiano di sostenibilità dei prodotti di risparmio gestito.

Misura la sostenibilità di fondi e SICAV mediante una metodologia che integra diversi elementi complementari.

Survey: valutazione trasversale a tutti gli strumenti gestiti dalla società di gestione che prende in esame la CSR aziendale e la gamma prodotti

SFDR: grado di sostenibilità del singolo fondo in coerenza con la normativa europea

Trasparenza: disponibilità del gestore a condividere le informazioni rilevanti sugli strumenti gestiti

Analisi di Portafoglio: i titoli che compongono il portafoglio del fondo sono valutati rispetto al grado di sostenibilità per verificare in modo puntuale la vocazione ESG nella sua realizzazione concreta.

Il rating è espresso su una scala da 1 a 5, ed esprime il grado di sostenibilità in maniera assoluta.

